

Do you toss items in a recycling bin without knowing if it's an accepted item or hoping it will be recycled?  
Then you might be



# *Wishful Recycling*



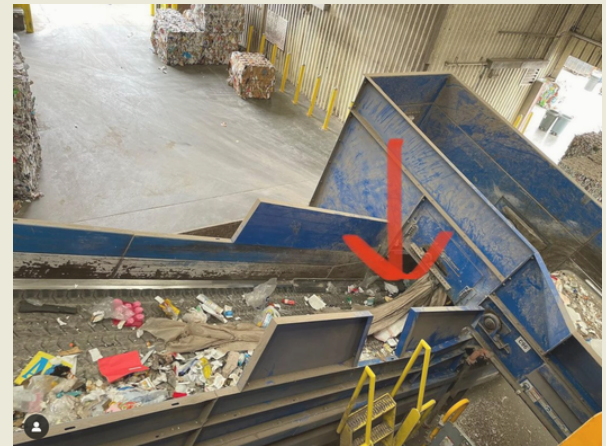
Like a fairy tale, "wish-cycling" is also a myth!

Recycling centers only accept items they can sell to a commodities market. Putting non-accepted items in a blue bin does not help the process, unfortunately, this does more harm than good.



## Why is it bad?

Wish-cycling creates contamination, which may cause entire loads of recycling to go to a landfill, and can also harm machinery and workers.



This photo displays a plastic bag caught in the recycling machines.

## Instead...

Scan the QR code to learn more about Zero Waste



***When in doubt,  
throw it out!***